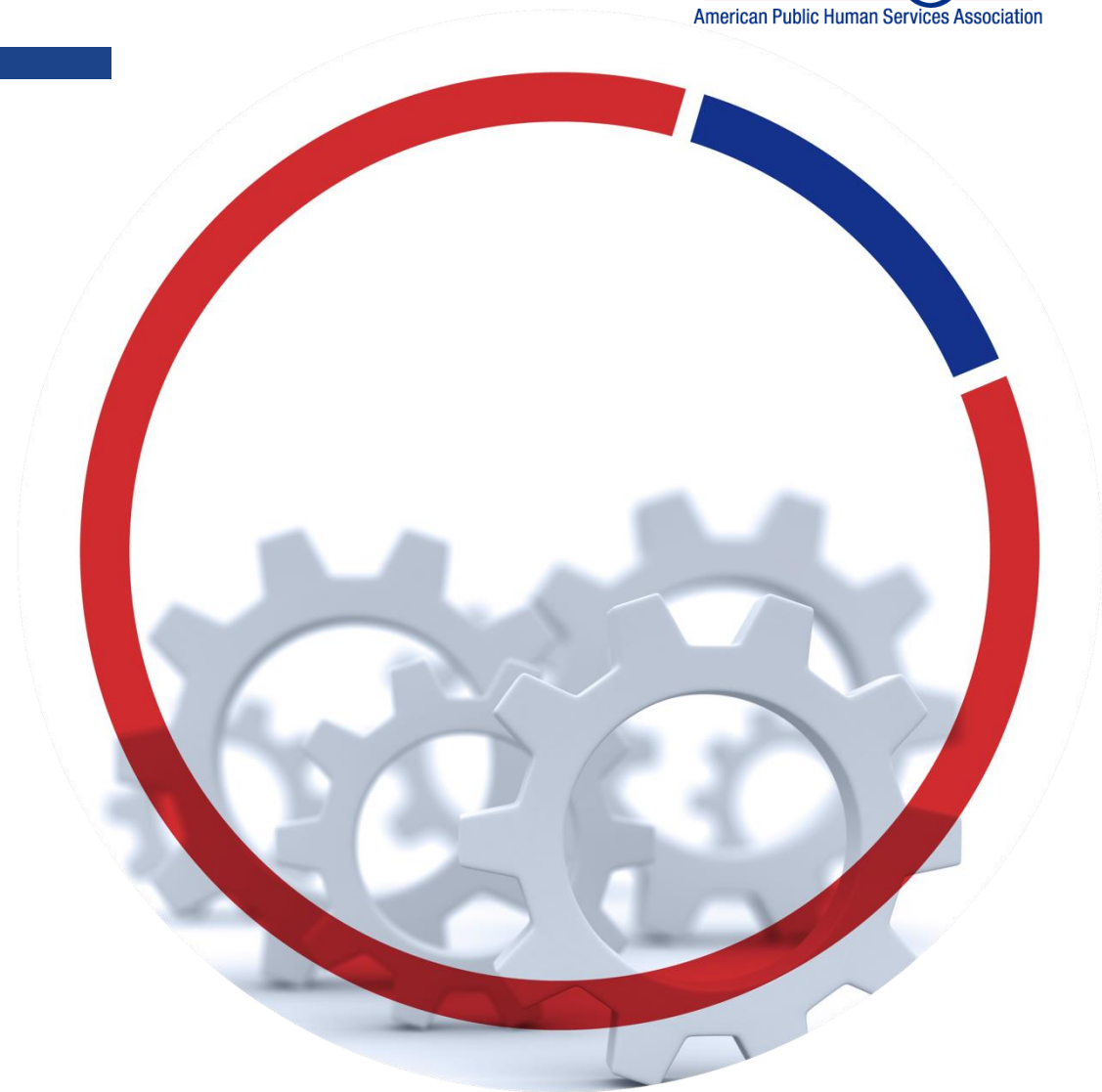


TANF Modernization – Where Are You Going & How Do You Get There?

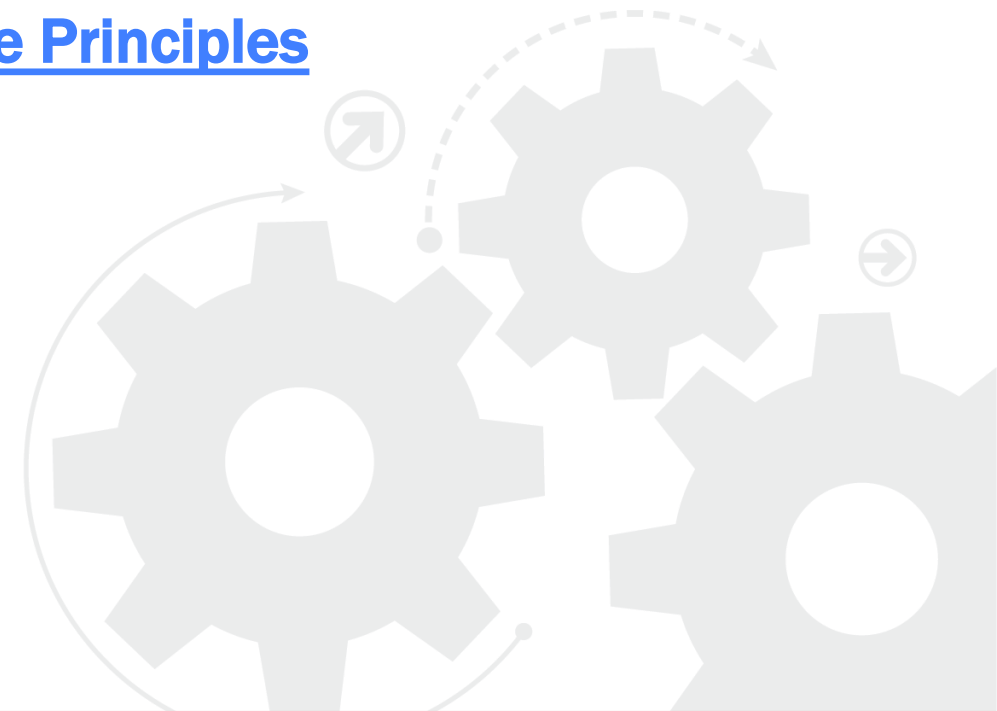
Mary Nelson

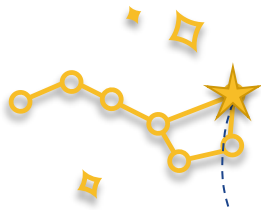
Policy Association, NASTA Staff Liasson
American Public Human Services Association
mnelson@aphsa.org



A Desired Future State for TANF Where Are You Going?

APHSA TANF Modernization Core Principles





TANF Modernization Core Principles



TANF MODERNIZATION CORE PRINCIPLES

We maintain the values of equity, inclusion, and the limitless possibilities of human potential as a clear North Star, guiding each of the Core Principles and all of our work; these values must serve as the foundation for building modern TANF programs to support child and family well-being for generations to come.

To advance these values, we pull each Core Principle through a race equity lens.

TANF Modernization Core Principles (continued)

TANF MODERNIZATION CORE PRINCIPLES



1 To help families achieve economic mobility, TANF must support the physical, social, and emotional well-being of individuals and their family.

TANF MODERNIZATION CORE PRINCIPLES



2 TANF must prioritize tailored solutions that help families succeed for the long term.

TANF MODERNIZATION CORE PRINCIPLES



3 TANF should foster conditions that advance a person's sense of agency over their life and belonging within their community.

TANF MODERNIZATION CORE PRINCIPLES



4 To best help families achieve their goals, TANF policies should be centered in evidence and promising practices that reflect the lived experiences of families.

TANF MODERNIZATION CORE PRINCIPLES



5 The broader workforce system must provide a coordinated continuum of services that supports all jobseekers' strengths, goals and needs.

TANF MODERNIZATION CORE PRINCIPLES



6 Families must have access to adequate assistance and services that allows them to meet their basic needs while working to achieve their long term goals.

TANF Modernization How Do You Get There?

Working Together – A Roadmap to Human Services System Alignment



Buy-in From Key Human Services Leadership

What: Leadership acknowledges and understands the importance of what you are trying to achieve within TANF programs.

Why:

- Agency priorities support TANF agency priorities and goals
- The work is adequately resourced and funded
- Staff and program leaders are empowered downstream to do the work to modernize TANF programs
- Accountability

How:

- Educate leaders with succinct materials and resources
- Demonstrate the need through outcomes simulators
- Use data and practice examples from other jurisdictions



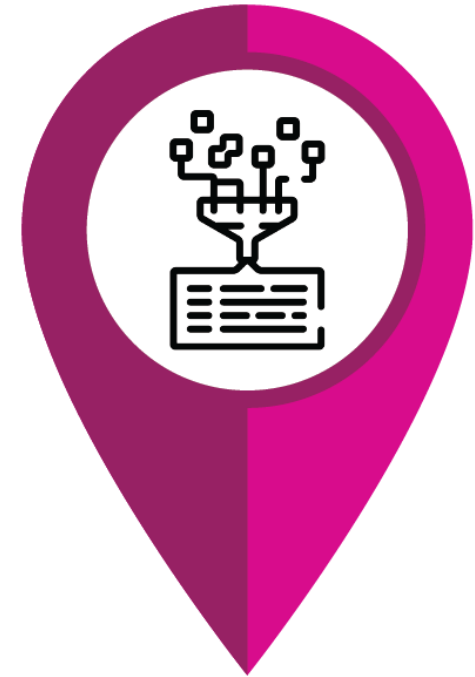
What: Collect and analyze data to inform how TANF programs are functioning, outcomes for families, and the experiences and needs of families.

Why:

- Identify gaps in services TANF families may be experiencing
- Understand where policies and practice create opportunities or barriers for families
- Constituent voice informs service delivery and policy decisions
- Confirm or dispel myths about TANF families

How:

- Collect available program data to assess immediate and long-term outcomes. Use data walks to engage a community stakeholders.
- Use constituent feedback mechanisms (surveys, focus groups, committees, etc.)



Cross-System Partnerships

What: System partners organize, establish shared goals, and coordinate service provision for shared customers with TANF programs.

Why:

- Better provide cohesive services to TANF families to meet their basic needs and support long-term economic mobility
- Barriers to access services, programs and supports across human services are reduced, support long-term success

How:

- Establish/participate in interdisciplinary committees, work groups, etc.
- Resource mapping to identify key stakeholder and partners
- Agree on and train staff on coordinated case management, referral processes, and information sharing
- Coordinate with staff designated to support system alignment



Create Tools, Resources or Strategies to Better Meet Families' Needs

What: design and deploy tools and strategies that changes the way families interact with TANF programs, such as benefits navigators, online applications, written materials, aps, etc.

Why:

- Accessing TANF programs becomes intuitive for families
- Information and access to TANF as a package of services, cash assistance, supportive services, case management, work activities, is readily available to families

How:

- Invest in whole-family approaches and family-centered coaching models, and the staffing to support
- Design tools with families to communicate in ways that are accessible to families in your communities (text systems, aps, comprehensive informational web-pages)

